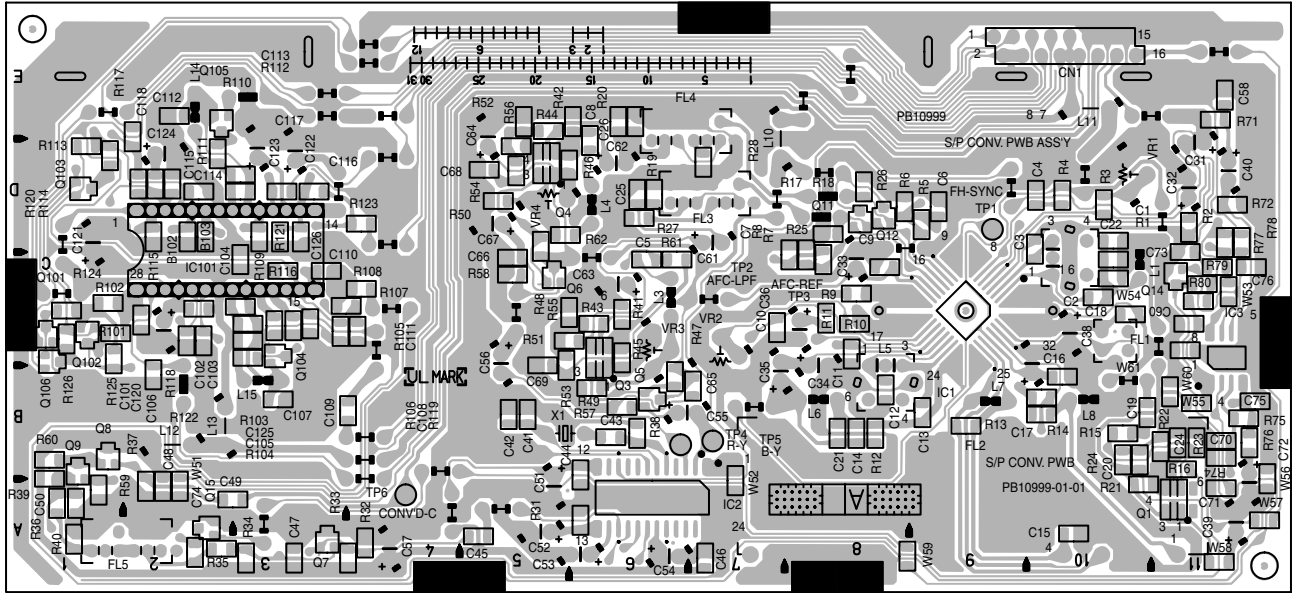


SECTION 4 CHARTS AND DIAGRAMS

4.39 S/P CONVERTER CIRCUIT BOARD

**<87> S/P CONVERTER
PB10999-01-01**

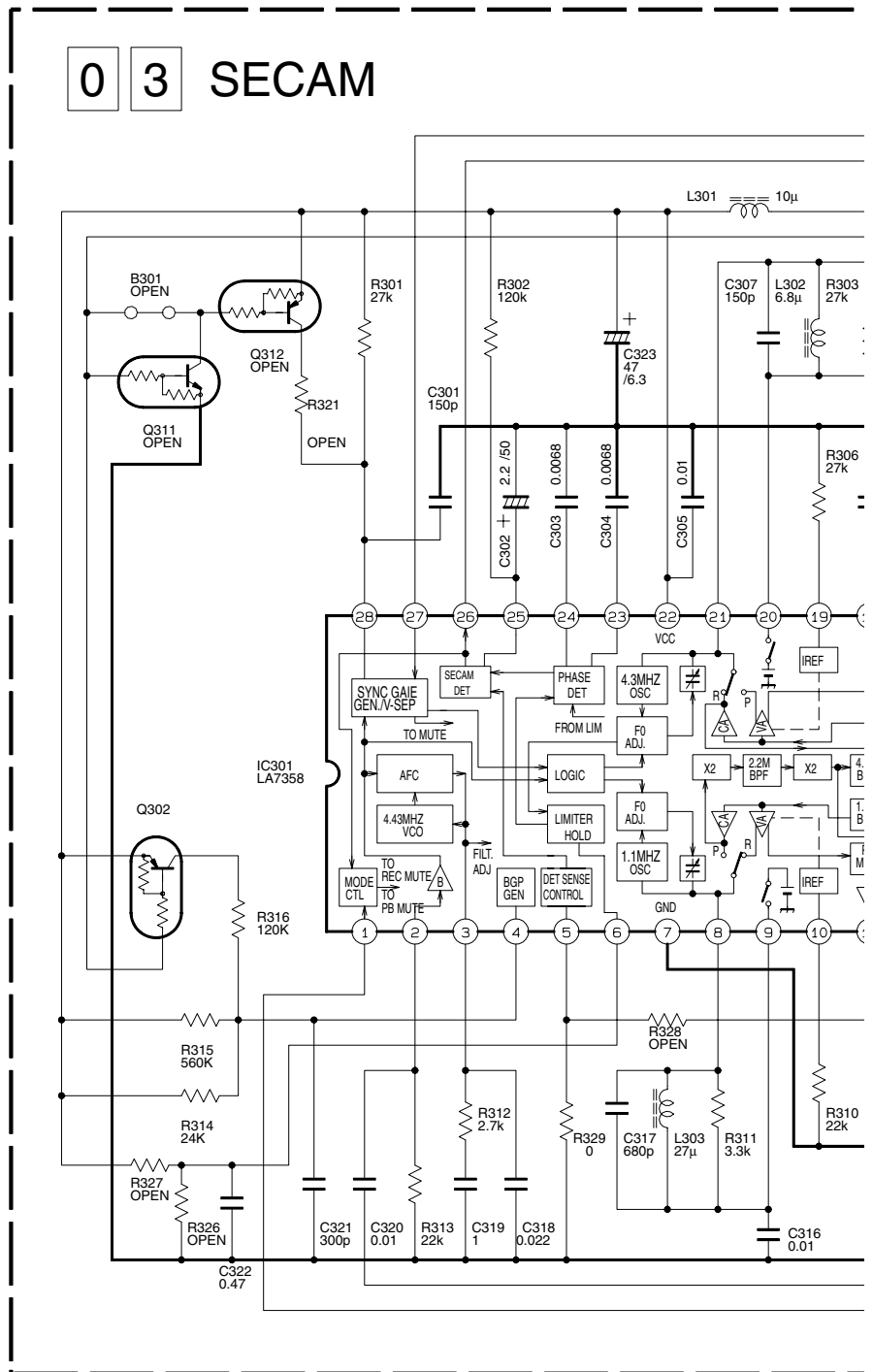


COMPONENT PARTS LOCATION GUIDE <S/P CONVERTER>

REF.NO.	LOCATION	REF.NO.	LOCATION	REF.NO.	LOCATION	REF.NO.	LOCATION	REF.NO.	LOCATION	REF.NO.	LOCATION	REF.NO.	LOCATION												
CAPACITOR																									
C1	B C	10C	C43	B C	6B	C106	B C	2B	L7	A D	9B	R8	B C	8C	R48	B C	5D	R115	B C	2D					
C2	B C	10C	C44	B C	6B	C107	B C	3B	L8	A D	10B	R9	B C	8C	R49	B C	6B	R116	B C	3C					
C3	B C	10D	C45	B C	5A	C108	B C	3C	L10	A D	7D	R10	B C	8C	R50	B C	5D	R117	B C	1D					
C4	B C	10D	C46	B C	7A	C109	B C	4B	L11	A D	10E	R11	B C	8C	R51	B C	5C	R118	A D	2B					
C5	B C	6C	C47	B C	3A	C110	B C	3C	L12	A D	2B	R12	B C	8B	R52	B C	5D	R119	B C	3C					
C6	B C	9D	C48	B C	2A	C111	B C	4C	L13	A D	2B	R13	B C	9B	R53	B C	5C	R120	B C	2D					
C7	B C	7C	C49	B C	3A	C112	B C	2E	L14	A D	2E	R14	B C	10B	R54	B C	5D	R121	B C	3D					
C8	B C	6D	C50	B C	1A	C113	B C	3D	L15	A D	3B	R15	B C	10B	R55	B C	5C	R122	B C	2C					
C9	B C	8C	C51	A D	5A	C114	B C	2D	TRANSISTOR				R16	B C	11B	R56	B C	5E	R123	B C	4D				
C10	B C	7C	C52	A D	5A	C115	B C	2D	Q1	B C	11A	R17	A D	8D	R57	B C	6B	R124	B C	1C					
C11	B C	8C	C53	A D	6A	C116	B C	3D	Q3	B C	6C	R18	A D	8D	R58	B C	5C	R125	B C	1C					
C12	B C	8B	C54	A D	6A	C117	B C	3D	Q4	B C	5D	R19	B C	6D	R59	B C	1A	R126	B C	1C					
C13	B C	9B	C55	A D	7B	C118	B C	2E	Q5	B C	6B	R20	B C	6E	R60	B C	1B	TEST POINT							
C14	B C	8B	C56	A D	4A	C121	A D	1D	Q6	B C	5C	R21	B C	10A	R61	B C	6C	TP1	A D	9D					
C15	B C	10A	C57	B C	11E	C122	A D	3D	Q7	B C	3A	R22	B C	11B	R62	B C	5D	TP2	B C	7C					
C16	B C	10B	C58	B C	11C	C123	A D	3D	Q8	B C	1B	R23	B C	10B	R71	B C	11E	TP3	B C	8C					
C17	B C	10B	C59	A D	7D	C124	A D	2D	Q9	B C	1B	R24	B C	10B	R72	B C	11D	TP4	A D	7B					
C18	B C	10C	C60	A D	6D	C125	B C	3C	Q11	B C	8D	R25	B C	8D	R74	B C	11B	TP5	A D	6B					
C19	B C	10B	C61	A D	6C	C126	B C	3D	Q12	B C	8D	R26	B C	8D	R75	B C	11B	TP6	A D	4A					
C20	B C	10B	C64	A D	5D	CONNECTOR				Q14	B C	11C	R27	B C	6D	R76	B C	11B	OTHERS						
C21	B C	8B	C65	B C	7B	CN1	A D	10E	Q15	B C	2A	R28	B C	7D	R77	B C	11D	FL1	A D	10C					
C22	B C	10D	C66	B C	5C	IC				Q101	B C	1C	R31	B C	6A	R78	B C	11D	FL2	A D	9A				
C24	B C	11B	C67	A D	5D	IC1	B C	9C	Q102	B C	1C	R32	B C	4A	R79	B C	11C	FL3	A D	7D					
C25	B C	6D	C68	B C	5D	IC2	B C	7A	Q103	B C	1D	R33	B C	4A	R80	B C	11C	FL4	A D	7D					
C26	B C	6E	C69	B C	5C	IC3	B C	11C	Q104	B C	3C	R34	B C	3A	R101	B C	1C	FL5	A D	2A					
C31	A D	11D	C70	B C	11B	IC101	A D	3D	Q105	B C	2E	R35	B C	2A	R102	B C	1C	FL6	A D	10D					
C32	A D	11D	C71	B C	11A	RESISTOR				Q106	B C	1C	R36	B C	1A	R103	B C	3C	VR1	A D	2A				
C33	A D	8C	C72	A D	11B	R1	B C	10C	R37	B C	2A	R37	B C	2A	R104	B C	3C	VR2	A D	10D					
C34	A D	8C	C73	B C	11D	R2	B C	11D	R38	B C	6B	R105	B C	6B	R105	B C	3C	VR3	A D	6C					
C35	A D	8B	C74	B C	2A	R3	B C	10D	R39	B C	1B	R106	B C	1B	R106	B C	3C	VR4	A D	7C					
C36	A D	8C	C75	B C	11B	R4	B C	10D	R40	B C	1A	R107	B C	1A	R107	B C	3C	X1	A D	5B					
C37	A D	10B	C76	B C	11C	R5	B C	9D	R41	B C	6C	R108	B C	6C	R108	B C	4C								
C38	A D	10C	C101	B C	2C	R6	B C	8D	R42	B C	5E	R109	B C	5E	R109	B C	3D								
C39	A D	11A	C102	B C	2C	R7	B C	8C	R43	B C	6C	R110	A D	3E	R110	A D	3E								
C40	A D	11D	C103	B C	2C					R44	B C	5E	R111	B C	2D	R111	B C	2D							
C41	B C	5B	C104	B C	3C					R45	B C	6C	R112	B C	3D	R112	B C	3D							
C42	B C	5B	C105	B C	3C					R46	B C	5D	R113	B C	1D	R113	B C	1D							
														R47	B C	6B	R114	B C	2D						

4.40 SECAM SCHEMATIC DIAGRAM

0 3 SECAM



NOTES: UNLESS OTHERWISE SPECIFIED.
 ALL RESISTANCE VALUES ARE IN OHMS.
 ALL INDUCTANCE VALUES ARE IN H.
 ALL CAPACITANCE VALUES ARE IN μF.

- ELECTROLYTIC
- CERAMIC
- MYLER
- NON POLAR

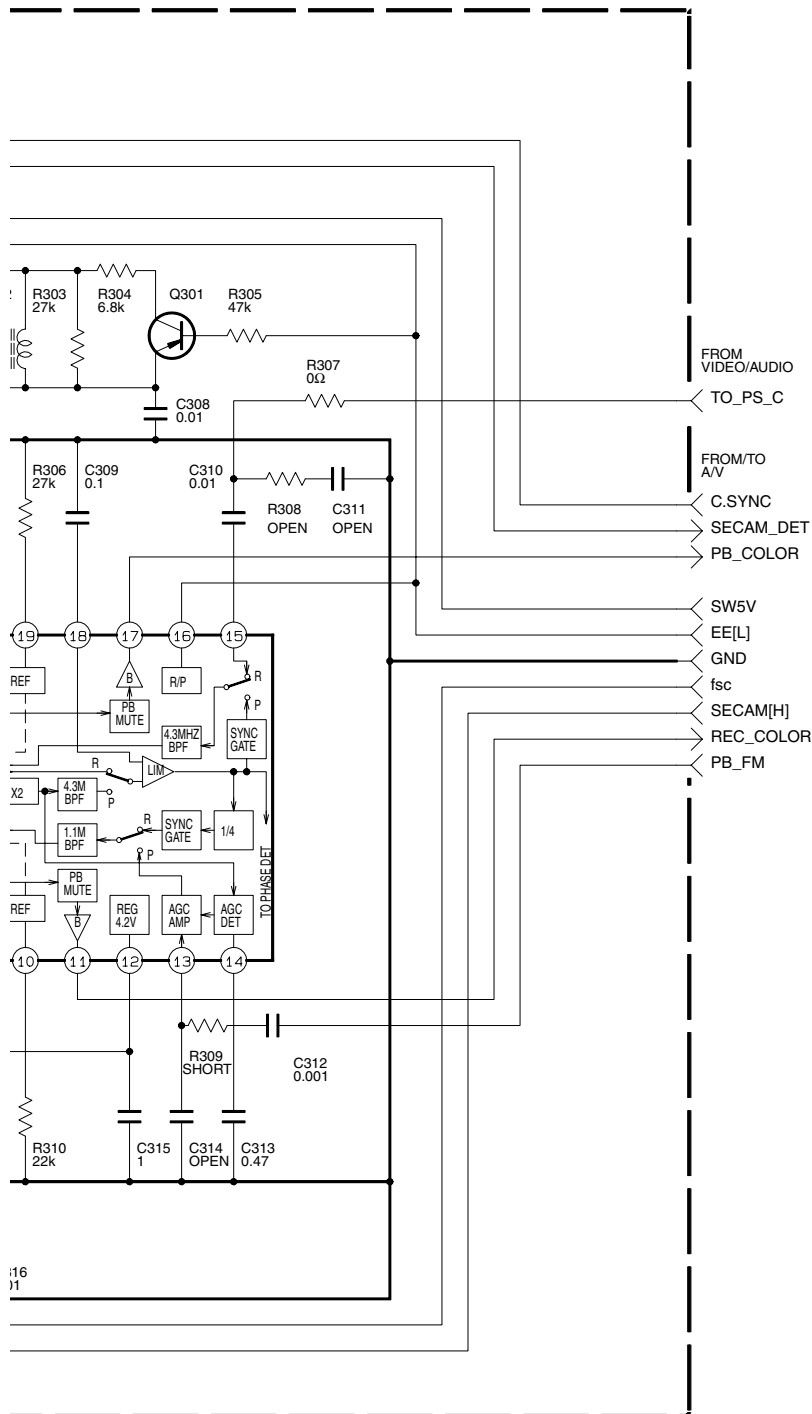
A

B

C

D

Note : The Parts Number, value and rated voltage etc. in the Schematic Diagram are for references only.
When replacing the parts, refer to the Parts List.



p30067001a_rev0

4.41 S/P CONVERTER SCHEMATIC DIAGRAM

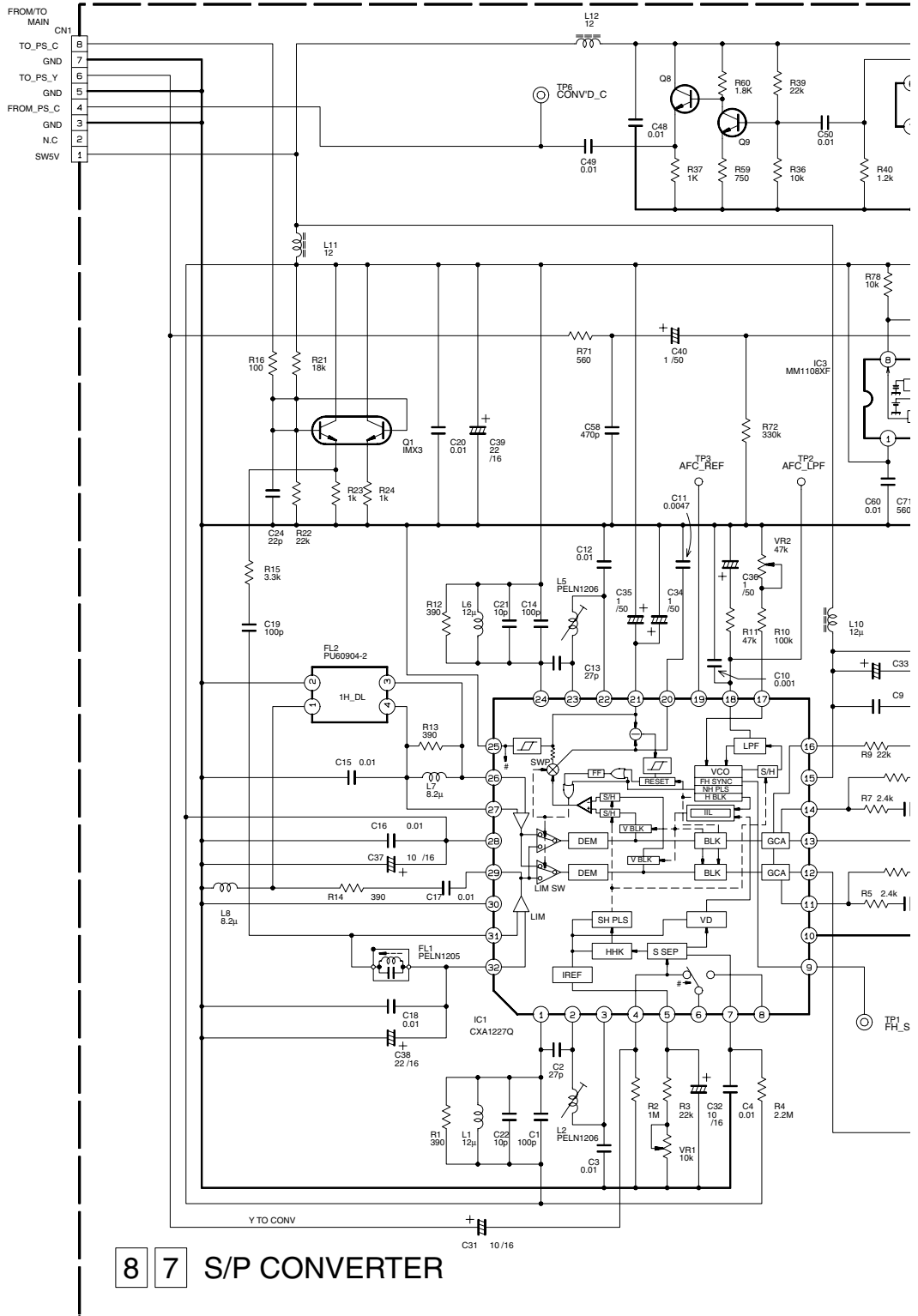
5

4

3

2

1



8 7 S/P CONVERTER

NOTES: UNLESS OTHERWISE SPECIFIED. # MARK ELEMENTS

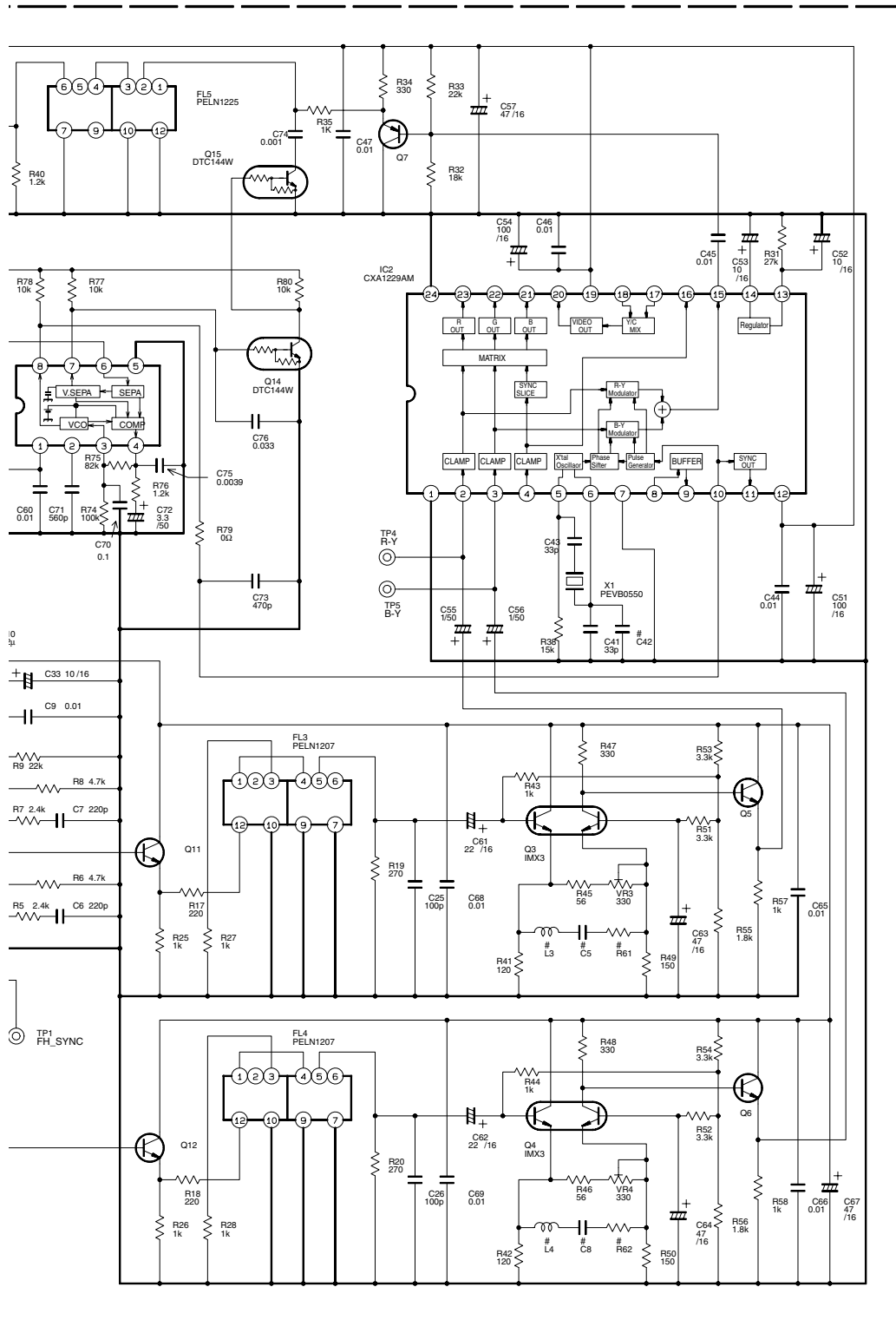
ALL RESISTANCE VALUES ARE IN OHMS.

ALL INDUCTANCE VALUES ARE IN H.

ALL CAPACITANCE VALUES ARE IN µF.

- ELECTROLYTIC
- CERAMIC
- MYLER
- NON POLAR

Note : The Parts Number, value and rated voltage etc. in the Schematic Diagram are for references only.
When replacing the parts, refer to the Parts List.



p20106001a_rev0

ELEMENTS ARE NOT MOUNTED.